

# Maths Vocabulary - Time

Unsure of what that word means in your homework? Well you may find it here!



**Ocean**  
**Academy**  
Poole

# Analogue Clock

A clock or watch is called "analogue" when it has moving hands and (usually) hours marked from 1 to 12 to show you the time.

Some have Roman Numerals (I, II, III, etc) instead, or no numbers at all!

In other words: not a digital clock.

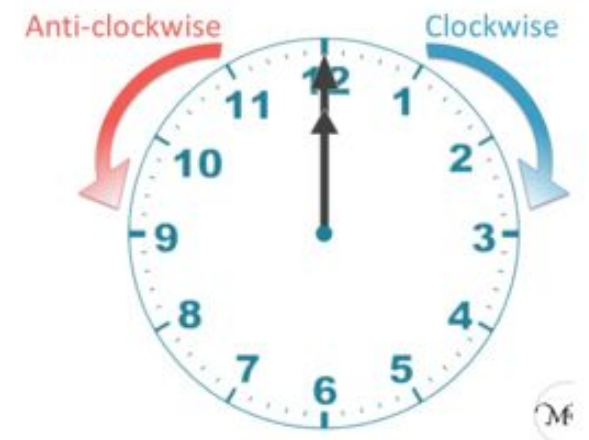


# Anticlockwise

Moving in the opposite direction to the hands on a clock.

Also called counter clockwise (US English).

Angles are usually measured anticlockwise.



# Calendar

A diagram that shows what day and month it is



**Ocean**  
**Academy**  
Poole

# Century

One hundred years.

The 1st Century was from the Year  
1 to the Year 100

The 2nd Century was from 101 to  
200

...

The 20th Century was from 1901 to  
2000

The 21st Century is from 2001 to  
2100

We are currently in the 21st  
century.



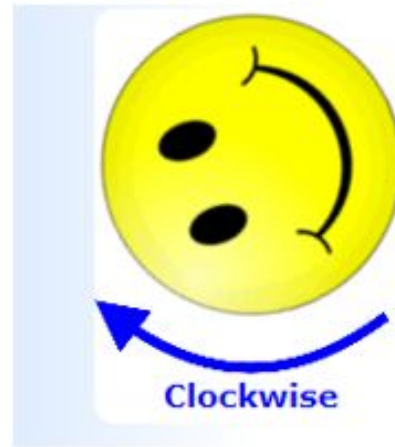
**Ocean  
Academy**  
Poole



# Clockwise

Moving in the direction of  
the hands on a clock.

(The opposite direction is  
called Anticlockwise.)



# Decade

A period of  
10 years

Here is a VW Camper Van from the 1960s (the decade 1960 to 1969):



**Ocean**  
**Academy**  
Poole

# Digital Clock

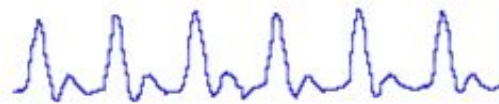
A clock or watch that shows  
the time using numbers, not  
hands. It can be 12 hours or  
24 hours





# Frequency

How often something happens (usually during a period of time).



# Hour

A period of time equal to  $1/24$  (a twenty-fourth) of a day.

1 Day = 24 Hours  
1 Hour = 60 minutes.



**Ocean  
Academy**  
Pool

# Hour hand

The small hand on a clock  
that shows the hours.

It goes once around the  
clock every 12 hours  
(half a day).



**Ocean  
Academy**  
Poole

# Ordering

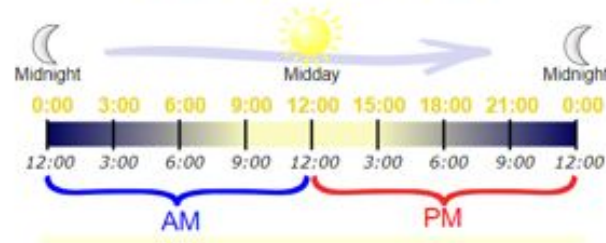
Putting things into  
their correct place  
following some rule.



**Ocean**  
**Academy**  
Poole

# Midday

The middle of the day: 12 o'clock  
noon. 12:00

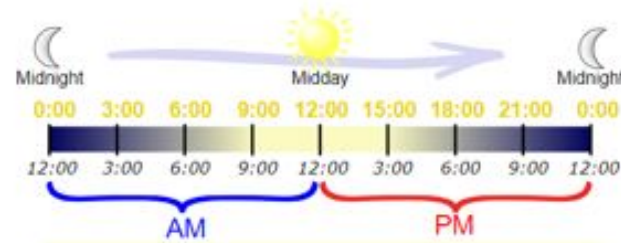




# Midnight

The middle of the night:  
12:00 at night (0:00 on a  
24 hour clock).

The end of one day and  
the start of the next.



**Ocean  
Academy**  
Poole

Millennium

A period of time of  
a thousand years.



# Minute

A unit of time equal to 60 seconds.

There are 60 minutes in an hour.



# Minute Hand

The large hand on a clock that points to the minutes.

It goes once around the clock every 60 minutes (one hour).



Month

One of the twelve parts of the year:

- January
- February
- March
- April
- May
- June
- July
- August
- September
- October
- November
- December



**Ocean**  
**Academy**  
Poole



# Probability

The chance that something will happen.  
How likely it is that some event will occur.



**Ocean**  
**Academy**  
Poole

# Roman numerals

Seven letters are used in combination to write numbers:

I = 1	V = 5
X = 10	L = 50
C = 100	D = 500
M = 1000	



# Seasons

The natural divisions of the year.

In many countries they are:

- Spring
- Summer
- Autumn
- Winter



# Second

The basic unit of time.

There are 60 seconds in 1 minute  
and 3,600 seconds in an hour.

In this clock the hand that moves  
the fastest shows the seconds. It is  
called the "Second Hand".



**Ocean**  
**Academy**  
Pool

# Time

Time is the ongoing sequence of events taking place. The past, present and future.

The basic unit of time is the second. There are also minutes, hours, days, weeks, months and years.

We can measure time using clocks.





# Timetable

A table of  
information  
showing when  
things will happen

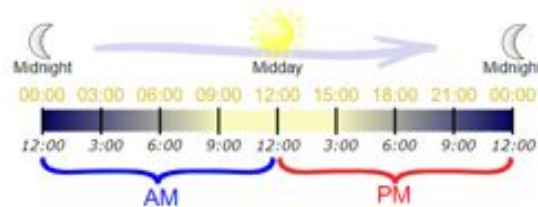
<i>SERVICE NUMBER</i>		424	424
		SX	SX
Galway (Bus Station)	dep.	0730	0820
Salthill		0740	
Barna (Donnelly's)		0749	0841
Furbo		0757	0850
Spiddal (Cruiscin Lan)		0807	0907
Inverin Post Office		....	0920
Tully Cross		....	0927



**Ocean  
Academy**  
Poole

# Twelve- Hour Clock

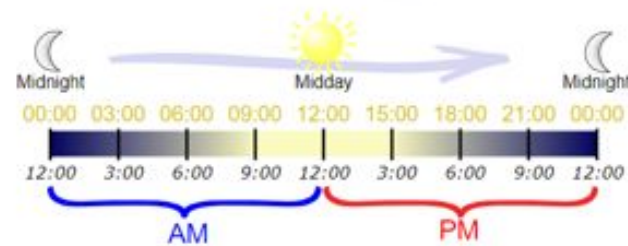
Is where the time is told using the 12 hours from midnight to midday (the morning or "AM" hours), and the 12 hours from midday to midnight (afternoon and night, the "PM" hours)



**Ocean  
Academy**  
Poole

# Twenty-four hour clock

Is where the time is told  
using the full 24 hours in  
the day



Week

A time period  
of 7 days.

Tuesday,  
9 June 2020

Mon	Tue	Wed	Thu	Fri	Sat	Sun
1	2	3	4	5	6	7
8	9	10	11	12	13	14
15	16	17	18	19	20	21
22	23	24	25	26	27	28
29	30	1	2	3	4	5





# Weekday

One of the days when people normally go to work or school.

In most English-speaking countries the weekdays are:

Monday, Tuesday,  
Wednesday, Thursday and  
Friday.

Monday, Tuesday, Wednesday, Thursday, Friday, Saturday, Sunday

Weekdays

Weekend



**Ocean**  
**Academy**  
Poole



# Weekend

The days at the end of the week when people normally do NOT go to work or school.

In most English-speaking countries the weekend is Saturday and Sunday.

Monday, Tuesday, Wednesday, Thursday, Friday, Saturday, Sunday

*Weekdays* *Weekend*



**Ocean  
Academy**  
Poole

# Year

The period of time it takes Earth to go once around the Sun.

There are 365 days in a normal year and 366 days in a leap year.

There are 12 Months in a year.

There are a little over 52 weeks in a year.

The first day of the year is 1st January, and the last day is 31st December.



January  
February  
March  
April  
May  
June  
July  
August  
September  
October  
November  
December



**Ocean**  
**Academy**  
Poole